



**2012
Club Marine
Southern 80
Water Ski Race**



Official Competitor Briefing Sheet.

Welcome to the 2012 Club Marine Southern 80 Ski Race.

- It is the Responsibility of each Driver and Observer to be familiar with all sections of this sheet. (Also if possible give to skiers to read too.)
- Penalties/Disqualifications will occur at the Discretion of the Chief Judge if these rules are not adhered to for the duration of the Southern 80 Ski Race.
- Failure to Obey Officials in any area will result in Penalties.
- Abuse of Officials will result in Disqualification. Per SRA Rule:2.14
- The Southern 80 is run under SRA Rules and MWSC Conditions of Entry. Please refer to entry form for MWSC Conditions of Entry.

River Closures.

Saturday 11th-: From Torrumbarry Weir to Vic Park Boat Ramp.

Time 6 am-11.30am

Goldsbrough Road 4 km downstream of 5 Mile Ramp to Vic Park Boat Ramp

Time 11 am -6 pm.

Sunday 12th-: From Torrumbarry Weir to Vic Park Boat Ramp

Time 6am-6pm

Briefings.

Will be Held at MWSC Offices in Annesley St on Friday 10th February 2012. They will run every 30 min. Starting at 11.00am. Briefings will run for ½ an hour. **You Must Sign for attending.**

All Drivers and Observers must attend and sign attendance of Briefings. (MWSC encourages skiers to also attend.)

NO SIGNATURE - NO START.

If you are unable to attend on Friday, you **MUST** see officials at Start Line prior to your first race and arrange to view briefing. **ALLOW AN EXTRA HOUR.**

Remember your whole team will be Breath Tested Prior to competing in any Race over the whole weekend. You will be tested prior to Every Race.

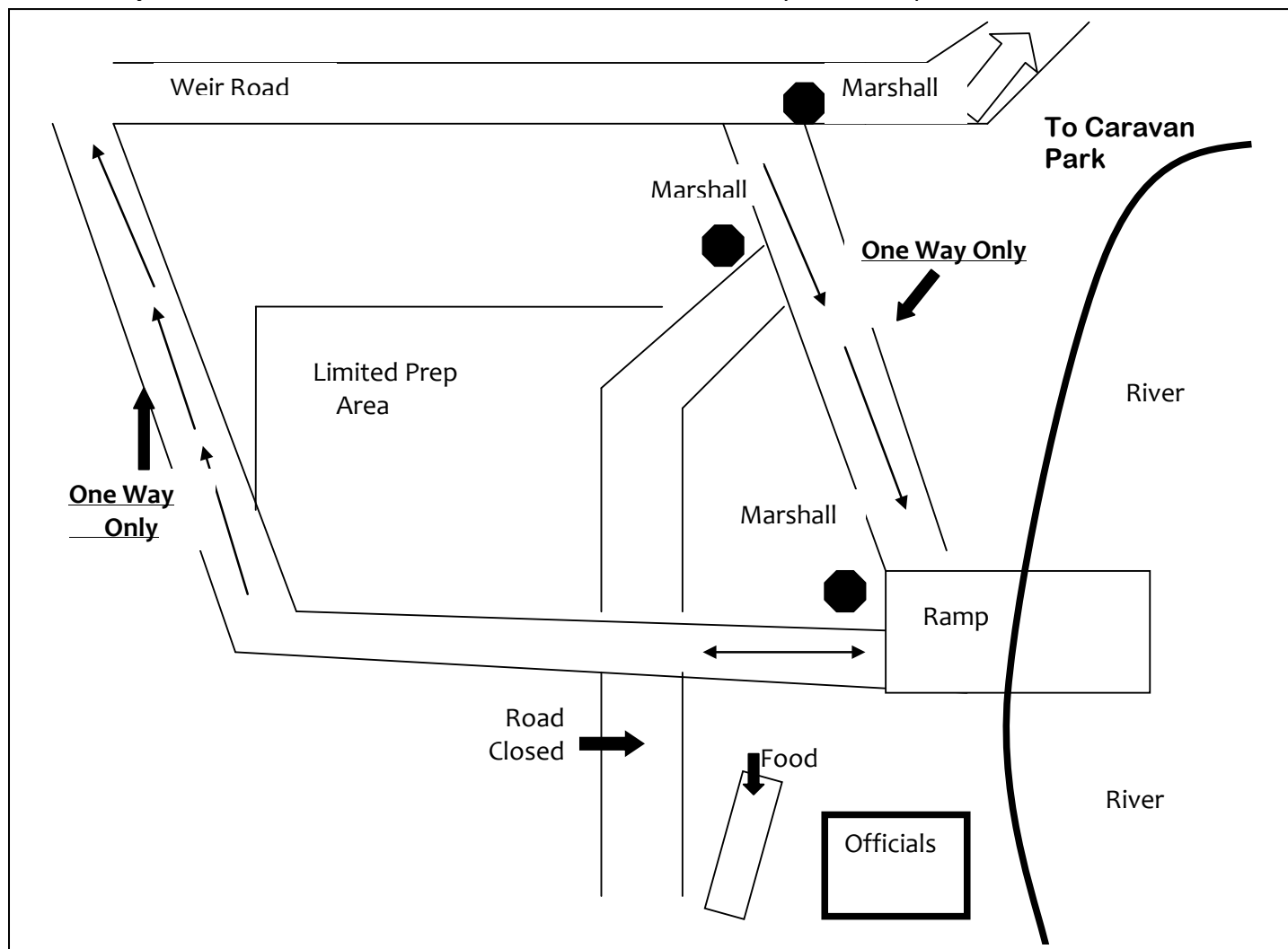
Report to officials at start areas to be tested, prior to entering the water.

MWSC recommends that all teams use a blue tick-Telstra Phone as this is the only provider that works the entire race course.

Saturday Program.

Saturday Start Procedures

Torrumbarry Boat Ramp



Launching Procedure – Torrumbarry Boat Ramp

Drive Slowly. There will be Marshals and other Traffic on the road.

1. Co-Operate with Officials.
 2. Give-way to boats called forward if requested to do so. Your turn will come.
 3. Ropes to be set up in preparation area along the side of the road only.
 4. Competitor Stickers must be displayed at all times.
 5. Trailer to be moved out of the area immediately the boat is in the water. Have all your gear in the boat. Trailer Crews who do not obey directions from Marshals will be deemed as a crew member and that crew will be dealt with at the finish line by the Chief Judge.
 6. Be early. No preference will be given to teams that are late.
 7. Competitors will be responsible for launching of their own boats.
 8. ABUSE OF ANY OFFICIAL BY ANY CREW MEMBER WILL MEAN INSTANT DISQUALIFICATION.
 9. ABUSE OF ANY OFFICIAL BY A PERSON WHO IS ASSOCIATED WITH ANY RACE TEAM WILL BE DEEMED PART OF THAT BOATS CREW AND SAME PENALTIES WILL APPLY.
 10. Crew members in separate cars are not permitted in trailer line and must obey officials and go to general car park, then walk to boat ramp. So have your gear in the boat.
 11. Wrist Bands must be worn by all competitors to gain entry to main compound at Finish Line.
- NO BAND NO ENTRY. NO EXCEPTIONS**

Warm Ups.

You may warm up slowly and carefully away from the start area. Competitors who cause problems in this area will be disqualified.

NO ALCOHOL ALLOWED IN BOATS DURING COMPETITION. NO CONSUMPTION OF ALCOHOL IS ALLOWED UNTIL BOAT IS REMOVED FROM THE WATER...

RACE PROCEDURE [pre start]: Up to date start lists can be viewed at each start line prior to racing.

Hooter will sound at 10 minutes to start.

FLAGS -	GREEN & NATIONAL	5 MINUTES TO START
	GREEN DOWN	30 SECONDS TO START Skiers in the water
	NATIONAL (AUSTRALIAN)	START

The first boat away in each session will get the National Flag. All others will get a green flag.

Start:

Odd Numbers start on Left side of River. Even numbers start on Right side of River.

The drop of the green flag for the boat prior to you is your ONE MINUTE call. The Green flag will then go up at 30 Seconds, This is your signal to drop your skiers into the water and run out your ropes. Keep engine idling and wait for countdown.

DO NOT DROP SKIERS IN UNTIL 30 SEC FLAG.

DO NOT CROSS THE START LINE.

PENALTIES WILL APPLY FOR BREACH OF THIS.

Call will be 15 sec, 10 sec call 5..4..3..2..1..GO !!! If you drop your skier, odd numbers circle to Left Bank. Even Numbers circle to Right bank. If a successful start is not made following 2 attempts, the competitor must either withdraw or move well away from start area. SRA Rule No 11.16(c)

**Remember-: If you have an Injury Call
Boat Recovery Immediately for assistance.**

54807266 or 0429408683

**If you break down you also must call this number
Immediately. 54807266 or 0429408683**

MWSC recommends that all teams use a Telstra Phone as this is the only provider that works the entire race course.

Racing:

Throughout the race, skiers are to ski no more than **2 metres** outside the wash. (SRA rule 11.22 d) Do not proceed along the course unless you have (2) skiers in full race trim. If you are caught by another boat, **move over to the right** and let them pass. If you stop for any reason, you must display your orange flag. Breach of the above rules will incur penalties or disqualification; there are marshal boats along the course watching for infringements.

Remember: Drive in the middle of the river and to the conditions of the day to ensure safe racing.

There are **Three** very tight bends on the course, all three are on the Saturday & Sunday full Course and one on the Saturday short course. They all are at least 90°.

The first one for the full course is just after Perricoota Homestead, which approx 4 km upstream of Headworks Boat ramp (ramp No 3).

The second one is 2½ to 3km upstream of Thunderbird Boat ramp. (No 8)

The third one is just before Merool Sandbar.

We have placed in your eye line prior to these corners have a large orange marker in a tree approx 200 metres before corner, to assist with reminder.

They all have a safety boat just before them. These boats will wave yellow flags if necessary as well as have an amber flashing light going if necessary to warn of fallen skiers and stopped boats.

Injuries:

Wave your Medical Flag to the next boat. If you see a waving Medical Flag, signal to the next Marshal boat and report to the Race Coordinator at the Finish Line. Please observe SRA Rules regarding injured members of your Crew.

IF YOU HAVE A SERIOUS INJURED SKIER, CALL THE EMERGENCY NUMBER ON THE BOAT STICKER (5480 7266) We have a paramedic standing By to assist when you call.

Safety boats are instructed to report incidents, but are to remain on station unless ordered to attend by Race Control.

MWSC recommends that all teams use a Telstra Phone as this is the only provider that works the entire race course.

Retirement:

You must move to the nearest bank and **Stay there**.

You must **Immediately call boat recovery / emergency number** from Yellow sticker.

THIS MUST BE YOUR FIRST CALL, AND THEN CALL YOUR LAND CREW or we can contact them for you and direct them to you. (5480 7266) Or TXT to 0429408683. Send Boat Name, Number and Class)

You will be instructed by the sweep boat crew, as to which ramp your boat is to be recovered from at either the end of that part of the racing or the next racing break.

Your Crew will be called over the P.A at the finish line and *one member only* must report to the Information Centre at the Race Control Office where they will be given directions on where to find you by the Boat Recovery official.

Failure to report to Boat Recovery will mean INSTANT DISQUALIFICATION for THE WHOLE team for Sunday Racing if Saturday or the next event entered which is organised by MWSC, which could be 2012 Barrie Beehag Ski Race And/or 2013 Southern 80 Ski Race.

MWSC recommends that all teams use a Telstra Phone as this is the only provider that works the entire race course. YOU MUST PHONE IN!

Remember-: If you have an Injury Call Boat Recovery Immediately for assistance. 54807266.



MWSC recommends that all teams use a Telstra Phone as this is the only provider that works the entire race course.

Finish Line – Victoria Park

Drop early and team will receive 1 minute penalty

Please note. This map is a guide only, common sense is to prevail. If there are too many boats in the area of the Red Buoys and you may have to stop sooner, or proceed on past the Red Buoys. *This is a Safety precaution to ensure that those who have completed the Race are not in danger in the finish line area.* The Safety Officer will be observing the finish line procedure.

Finish Line.....Chequered Buoy.

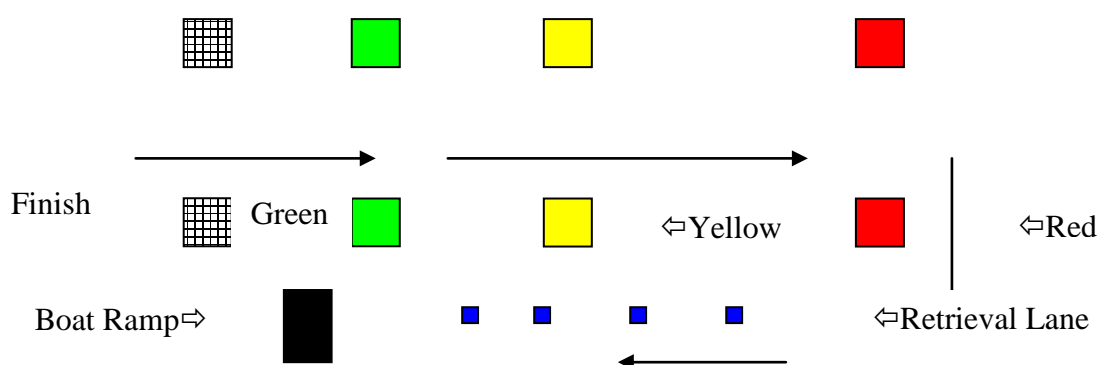
Slow Down.....Green Buoy.

Prepare to Stop.....Yellow Buoy.

Stop.....Red Buoy.

Lower your Skiers into the water on tight ropes. Then pull into boat. Do not go back. Skiers who fall after the line will be collected by a rescue boat. Boats are to idle in the retrieval lane.....Blue Buoy.

Skiers must not throw rope after crossing line.



FINISH LINE: Study the map above; and ask officials at start if you don't understand it.

Line boats up in retrieval lane. You will be removed from the water in order. Trailer Crew to line up at collection point, (top of Ramp fenced area).

Tractors will collect your trailer, and your boat will be returned to the trailer park. Do not attempt to jump the queue, penalties will apply.

All crews are to obey parking officials

Report Forms

At the end of racing **each** day teams need to complete the Race day report form and submit to Race Control by 6.00pm on the day of racing. If an incident occurs, an SRA INCIDENT form needs to be completed. Anyone requiring hospital treatment is also required to complete a NSW MARITIME report Form also. If forms are not handed in, race times will not be posted.

Protests:

All protests must be in writing, on an Official Protest Form as per SRA Rules. Protests must be lodged within 30 minutes of posting of provisional results, as per SRA Rules. Protest Fee as per SRA Rule No 5.1. Maximum of two (2) team members to attend protest meeting.

Abuse of officials will mean instant disqualification.

Decision of Chief Judge is final.

Post Race Scrutineering

There will be NO post race scrutineering.

Presentation

Presentation for Saturday events will be held at end of days Racing in Vic Park Finish line compound.

Persons unsuitably dressed will not be allowed onto Presentation area i.e. shirts must be worn.

No Alcohol or drinks on Presentation Dias.

Team members **MUST** be in attendance at presentation, or prize money will be forfeited.

No speeches will be allowed except for outright winners and Memorial Trophy Winners only.

Please show consideration for Memorial Trophy Presenters if you are receiving a Memorial trophy.

Launching Procedure for 5 Mile Boat Ramp.

See map for directions on Launch Procedures. (Next Page)

All Crews are to Launch own Boats. As area is limited please prepare your boat on the High ground to the right of the road in map.

Please park with consideration for others in this limited Parking area.

Only Boat and Trailers in this area, rest of team to park across road in spectator parking area. Load your equipment before entering launching area.

No boat is allowed down to ramp area till directed by an official. Please obey all officials directions.

Please Note.

Class 30-32 boats will not be allowed down to lower area or onto ramp till all of previous classes have left.

Class 33-35 boats will not be allowed down to lower area or onto ramp till all of previous classes have left.

Briefing for Blitz & Presidents competitors Only at 2.45pm.

Presidents Invitational Boats will not be allowed down on lower level or down the ramp till all Blitz Boats are in the water.

Warm up.

Boats may warm up on the downstream side of the 5 mile ramp as far as Goldsbrough road. You are **not** to proceed past the orange buoys.

You are required to warm up with extreme care.

No alcohol allowed in boats during competition/ No consumption of alcohol is allowed until boat is removed from the water.

Start, Racing & Injury procedures are as previously mentioned.

Retirement:

You must move to the nearest bank and **Stay there.**

You must Immediately call boat recovery call Boat Recovery / Emergency Number from Yellow sticker.

This must be your first call, then call you land crew.

(5480 7266) Or TXT to 0429408683.(Send Boat Name, Number and Class)

You will be instructed by the sweep boat crew, as to which ramp your boat is to be recovered from at either the end of that part of the racing or the next racing break. Your Crew will be called over the P.A at the finish line and *one member only* must report to the Information Centre at the Race Control Office where they will be given directions on where to find you by the Boat Recovery official.

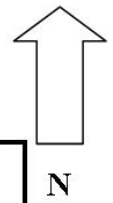
Failure to report to Boat Recovery will mean INSTANT DISQUALIFICATION for Sunday Racing if Saturday or the next event entered which is organised by MWSC, which could be either 2012 Barrie Beehag Ski Race And/or 2013 Southern 80 Ski Race. MWSC recommends that all teams use a Telstra Phone as this is the only provider that works the entire race course.



Please note:

Photo ID will be required to be breath tested.
You must be breath tested prior to each event
you compete in.

Traffic Control Southern 80 5 Mile Ramp



Slow Down Sign 80km

Slow Sign 60km

HELICOPTER



Marshall

One Way

Toilets
BOAT
PREP



Perricoota Rd

Marshall
SPECTATOR PARKING

One way only

Marshall

Marshall

Sign in afternoon

Official Tent

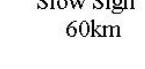
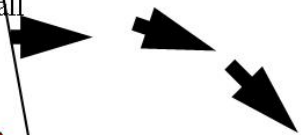
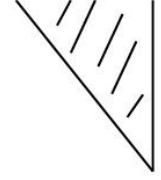
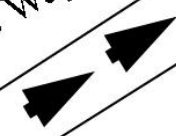
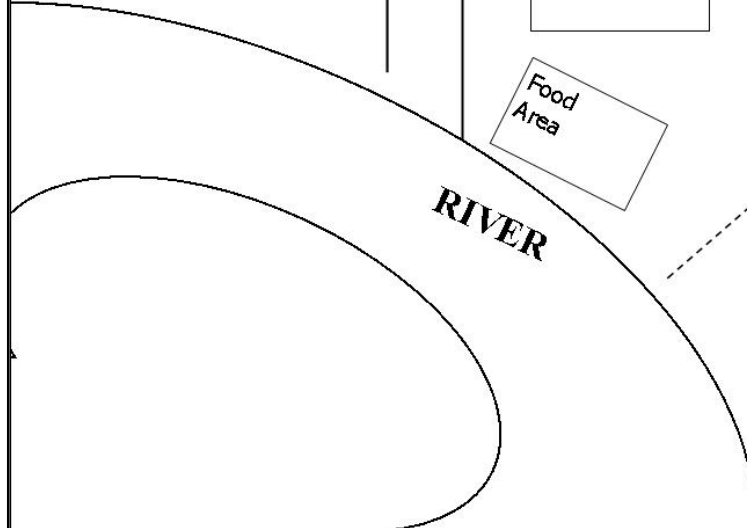
Fencing

Food Area

RIVER

Slow Sign 60km

Slow down Sign 80km



Sunday Start Procedures.

Torrumbarry launch Procedure is same as Saturday morning.

Start, Racing, Injuries, procedures are as previously mentioned.

RETIREMENT:

You must move to the nearest bank and **Stay there.**

You must Immediately call Boat Recovery / Emergency Number from Yellow sticker.

THIS MUST BE YOUR FIRST CALL, THEN CALL YOUR LAND CREW.

(5480 7266) Or TXT to 0429408683.(Send Boat Name, Number and Class)

You will be instructed by the sweep boat crew, as to which ramp your boat is to be recovered from at either the end of that part of the racing or the next racing break. Your Crew will be called over the P.A at the finish line and *one member only* must report to the Information Centre at the Race Control Office where they will be given directions on where to find you by the Boat Recovery official.

Failure to report to Boat Recovery will mean Instant Disqualification the next event entered which is organised by MWSC, which could be either the 2012 Barrie Beehag Ski Race And/Or 2013 Southern 80 Ski Race. MWSC recommends that all teams use a Telstra Phone as this is the only provider that works the entire race course.

Finish line, Protest & Post Race Scrutineering procedures are as previously mentioned.

PRESENTATION

Persons unsuitably dressed will not be allowed onto Presentation area i.e. shirts must be worn.

No Alcohol or drinks on Presentation Dias.

Team members must be in attendance at presentation, or prize money will be forfeited.

No Speeches will be allowed except for Outright Winner and Memorial Trophy Winners.

Please show consideration for Memorial Trophy Presenters if you are receiving a Memorial trophy.

If you have any questions, please don't hesitate to ask an official at Start or Race Control area.

The Moama Water Sports Club wish you all a safe and Successful 2012 Club Marine Southern 80 Ski Race.



A.C.N. 002 570 738
A.B.N. 11 002 570 738





Reminders.

✿ Team Members Must be breath tested prior to each event they are competing in.

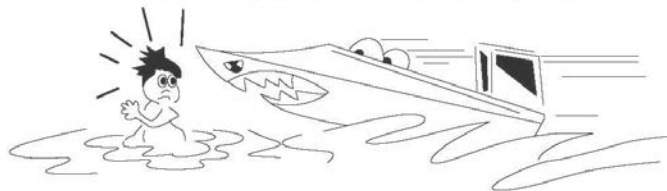
✿ Photo ID is required for breath testing.

✿ MWSC suggests that teams carry a Telstra phone in their boat as this is the only phone that works along the entire course.

✿ If you break down, you must call Boat Recovery on 54807266 or TXT to 0429 408 683.

This **MUST** be your fist call.

**SWIM ON SOUTHERN 80
RACE DAY!**



NO WAY!

**Sponsored & Supported by:
Moama Water Sports Club, NSW Maritime
Vic & NSW Police, Murray Shire
Shire of Campaspe**